

Our Partners

我们的合作伙伴

以下排名不分先后顺序
The following are in no particular order



硬质合金工具前处理设备专业制造商
Specialized manufacturer of carbide tool pre-process equipment



硬质合金工具前处理精密设备生产商
Manufacturer of precision equipment for pre-process of cemented carbide tools

东莞市鼎峰精密机械设备有限公司
DongGuan DingFeng Machinery Equipment Co.,LTD

Add:广东省东莞市长安镇锦厦河东二路23号纵盈智谷科技园一楼
1F,Zongying Zhigu Science and Technology Park,No.23 Hedong 2nd Road,Jinxia,Chang'an Town, Dongguan City,Guangdong Province, China.
Tel:+8613592790298
www.zoyacc.com



WeChat



WhatsApp

COMPANY PROFILE

公司简介

东莞市鼎峰精密机械设备有限公司成立于2007年，是一家集设计、研发、生产、销售和维修于一体的设备生产企业。公司一贯秉承追求卓越、诚信服务的理念，致力于提供专业技术、创造最佳品质、客户服务至上为经营宗旨。

公司主要生产硬质合金刀具前处理系列专用设备，包括硬质合金阶梯磨床/外圆磨床/倒角机/切断机/无心磨床/平面磨床/双端面磨床/硬质合金棒材检测包装机/送料机/收料机/砂轮修整机/刀具外观检测仪等。可根据机型量身定做。

公司位于素有“国际五金名镇”之称的东莞市长安镇，依托粤港澳大湾区发达的制造业。经过十多年的发展，公司现设有机械生产部、设备精密装配部、国内外销售部、研发中心等机构，并获得多项实用新型专利，产品自投放市场以来，以高性价比赢得了口碑和用户的青睐。产品畅销全国各地，并出口到世界多个国家，与多家企业建立了长期合作关系。通过积极参加世界重要的专业机械展会，公司取得了良好的业绩，进一步加强了对外交流。为了更有效地服务客户，公司现面向全球诚招经销代理商，欢迎有识之士莅临公司参观指导，洽谈合作事宜。





Dongguan Dingfeng Precision Machinery & Equipment Co., Ltd. was established in 2007, is a set of design, research and development, production, sales and maintenance in one of the equipment production enterprises.

The company has always been adhering to the pursuit of excellence, the concept of good faith service, is committed to providing professional technology, create the best quality, customer service first for business purposes.

The company mainly produces a series of professional equipment for pre-processing of cemented carbide tools, including cemented carbide step grinder/cylindrical grinder/chamfering machine/cutting machine/centerless grinder/surface grinder/double-end grinder/cemented carbide bar inspection and packaging machine/feeder/receiver/grinding wheel dresser/tool appearance tester, etc. It can be customized according to the machine model.

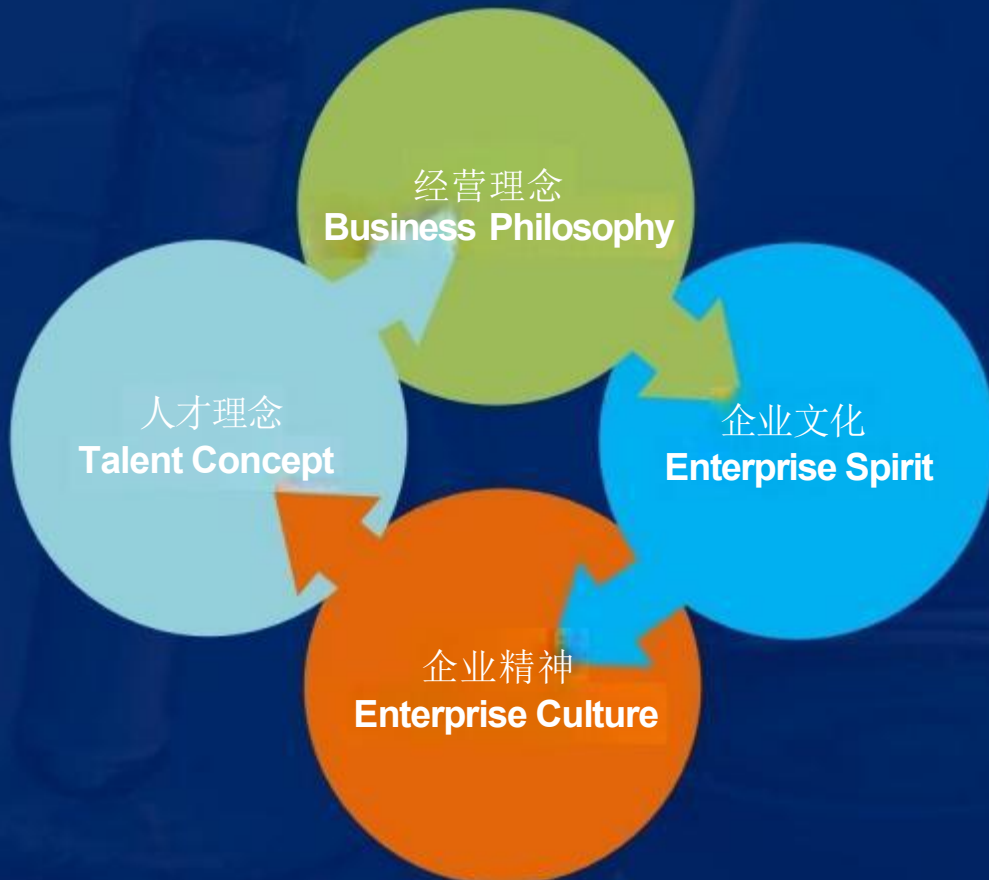
The company is located in Chang'an Town, Dongguan City, known as the "International Hardware Town", and is based on the developed manufacturing industry in Guangdong, Hong Kong and Macao Bay Area. After more than 10 years of development, the company now has machinery production department, equipment precision assembly department, domestic and international sales department, research and development center and other institutions; and has obtained a number of utility model patents.

Since the products have been put on the market, they have won the reputation and users' favor with high cost performance. The products are sold all over the country and exported to many countries in the world, and have established long-term cooperative relations with many enterprises.

By actively participating in the world's important professional machinery exhibitions, the company has achieved good results and further strengthened the foreign exchange. In order to serve our customers more effectively, the company is now looking for global distribution agents, and we welcome knowledgeable people to visit our company and discuss cooperation matters.

COMPANY CULTURE

公司简介





经营理念

质量第一、以客为尊、诚实守信

Quality first, customer service focusing, honest and trustable.

人才理念

员工是企业最宝贵的财富

Employees are the valuable asset of enterprise.

企业精神

求实进取、自强不息、追求卓越

训练有素的人：我们要有不断超越自我、开拓创新的精英团队

训练有素的思想：我们要有凡事做最好、追求零缺陷的品质观念

训练有素的行为：我们要有认真、规矩、自律、理性的工作作风

Capability: viability, productivity competitiveness, innovation.

Harmony: cooperate like a brother, always help and encourage each other.

Maintain: provide a suitable position stable work and live.

Happiness: enjoy the work and life brightly.

企业文化

力：生存力、生产力、竞争力、创新力

和：情同手足、相互鼓励

安：适才适所、安心安定

乐：光明活泼、明朗愉快

Keep progressing, develop Innovative technology, create a well-know brand to seve the community.

Training the people: build a elite team to keep progressing, continuous improving.

Training the mind: make the quality to be perfect, alm with zero defects.

Training the behavior: work in serious, stricltly rules, disdipline.

目录

Catalog

硬质合金切断机 Carbide Cutting Machine	5
段差磨床 Carbide cylindrical step grinding machine	7
硬质合金倒角机 Carbide chamfering machine	8
	10
外径研磨机 OD Grinding Machine	11
内径研磨机 I.D. Grinding Machine	12
双端面磨床 Double Face Grinding Machines	13
棒料检测包装机 Bar Inspection Packaging Machine	14
自动送收料机 Automatic Feeder and Receiver	14
非标自动化定制 Non-standard automation customization	15

全自动硬质合金圆棒切断机

Automatic Cemented Carbide Rod Cutting Machine



全自动硬质合金切断机系列，专为硬质合金棒料切断研发，共有三款型号，分别为08NC、12NC、30NC，可切外径范围3~40mm，广泛应用于硬质合金行业、硬质合金刀具行业、3C、航天、军工等行业自动化产线中并且提供最优切断加工工艺支持

Series of fully automatic carbide cut-off machine, designed for carbide bar cutting research and development, a total of three models, respectively, 08NC, 12NC, 30NC, can cut the outer diameter range of 3~40mm, widely used in the carbide industry, carbide cutting tool industry, 3C, aerospace, military and other industries in the automation of the production line and to provide the optimal cut-off processing technology support.

Equipment Feature 设备特点

- 整体护罩为灵活敞开式，方便操作和日常维护
- 操作系统智能化，便捷化，加工过程全自动化
- 可任意设置切割长度
- 带自动对刀系统
- 切割面无崩缺，掉角，斜口的现象
- 支持全球无线联网，可24小时远程监控设备

Flexible, open-ended overall cover for ease of operation and routine maintenance.
Intelligent and convenient operating system, fully automated process

Any cutting length can be set
With automatic tool setting system

No chipping, cornering, or beveling of cut surfaces
Supports global wireless networking

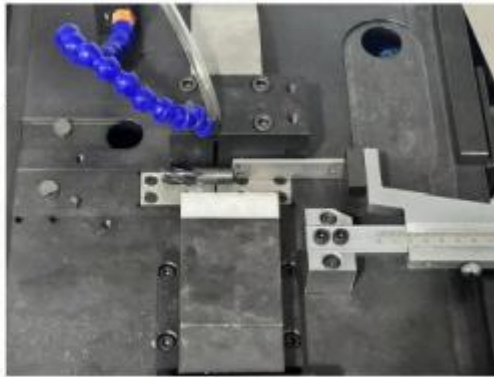


Parameters 产品参数

设备型号 Equipment Model	DFQ-08NC	DFQ-12NC	DFQ-08NC
切断数量 Number Of Cutting	4支 4 pcs	2支 2 pcs	1支 1 pcs
最大切割直径 Max cutting diameter	中8mm	中16mm	中40mm
切割精度 Cutting Accuracy	±0.05mm	±0.05mm	±0.05mm
加工范围 Processing Range	中3~ ϕ 8mm	中3~中16mm	中3~ ϕ 40mm
送料行程 Feeding Schedule	480mm	480mm	480mm
主电机 Main moto	3.7kW	3.7kW	3.7kW
送料伺服电机 Feeding Servo Motor	400W	400W	400W
切料伺服电机 Cutting Servo Motor	750W	750W	750W
移槽伺服电机 Slotting Servo Motor	200W	无伺服电机 No Servo Motor	无伺服电机 No Servo Motor
主轴转速 Spindle speed	3800 rpm	3800 rpm	3800 rpm
砂轮切割片 Cutting Wheel	中200x中25.4xH1.0	中200x中25.4xH1.0	中200x中25.4xH1.0
装料仓宽度 Rods Hopper Width	400mm	400mm	400mm
外形尺寸 Outside Dimension	1650x1500x950mm	1650x1500x950mm	1650x1500x950mm
机器重量 Machine weight	1350kg	1350kg	1350kg

半自动硬质合金圆棒切断机

Semi-automatic carbide rod cutting machine



Equipment Feature 设备特点

- 人性化触控控制面板
 - 灵活, 便捷, 一次夹持免重新设置可切外径1~25mm, 可对各种棒料和板材进行切断
 - 一键启动, 切断动作一次循环。
 - 极短设置和上手时间
 - 切断面无崩缺, 掉角, 斜口的现象
-
- Easy Set up control panel
 - Flexible, convenient, once clamped without resetting can cut outer diameter 01 25mm, can cut all kinds of bar and plate
 - One button start, cut off action in one cycle
 - Easy to set up and quick to get start
- There is no phenomenon of collapse, corner drop and oblique opening on the cutting surface.

Parameters 产品参数

设备型号 Equipment Model	DFB-008
切断数量 Number Of Cutting	1支 ONE
最大切割直径 Max cutting diameter	中25mm
切割精度 Cutting Accuracy	±0.05mm
加工范围	中1~中25mm
切料长度 Cutting Length	不限长度 Unlimited length
电机 Motor	1.5KW 2HP
主轴转速 Spindle speed	3800 rpm
砂轮切割片 Cut -Off Wheel	中152x中25.4x H1.0
外形尺寸 Outside Dimension	1650x1500x950mm
机器重量 Machine weight	230kg

数控硬质合金外圆段差磨床

CNC Carbide Step Cylindrical Grinding Machine



Parameters 产品参数

工作台左右移动行程Travel distance Z轴	225 mm	
工作台前后移动行程Travel distance X轴	225 mm	
额定转速Rated RPM	0~1000rpm	
电机功率Motor power	3.5KW	
砂轮主轴转速Grinding wheel spindle speed	0~3500rpm	
砂轮主轴功率Grinding wheel spindle power	5.5KW	
砂轮规格Grinding Wheel Specifications	Φ200×Φ31.75×10~35	
工件磨削直径范围Range of workpiece diameters	自动上料 Automatic loading	3~12mm
	手动上料Manual loading	
工件磨削长度范围Workpiece grinding length range	自动上归 Automatic loading	≤100mm
	手动上料Manual loading	
工件主轴跳动Workpiece spindle runout	<0.005mm	
砂轮主轴跳动Grinding wheel spindle runout	<0.005mm	
机床外形尺寸Machine size	1600X1430X1700	
机床重量Machine weight	2.5t	

1-Equipment Introduction 设备介绍

DF-MX20 数控硬质合金阶梯外圆磨床，适用圆棒类工件外圆及锥面磨削。特别适用于刀具制造厂以及零件生产企业对刀具制造坯料段差外圆及过度锥面的磨制。

DF-MX20 CNC Carbide Step Cylindrical Grinding Machine is suitable for cylindrical and taper grinding of round bar type workpieces. It is especially suitable for tool manufacturers as well as parts producers to grind the outer circle and excessive taper of tool manufacturing blank segment difference.

2-特性简介 characteristics:

2.1 机床设计有人机对话界面，变量编程、操作简单、方便快捷

The machine is designed with man-machine interface, variable programming, simple and convenient operation.

2.2 工件自动上下料，探针检测定位、可快速实现零件上下料功能，实现一人看管多机或通过系统管理实现无人化操作。

Automatic loading and unloading of workpieces, probe detection and positioning, can quickly realize the function of loading and unloading of parts, to achieve one person to watch over multiple machines or unmanned operation through system management.

2.3 机床导轨采用精密滚柱导轨副，刚性高、负荷大，采用高刚度的精密滚珠丝杠副传动。

The machine guideway adopts precision roller guideway sub, which has high rigidity and high load, and is driven by high rigidity precision ball screw sub.

2.4 电柜配置空调冷却系统，电气元件恒温工作，以提高所有元件的稳定性、寿命及可靠性。

The cabinet is equipped with an air-conditioning cooling system, and the electrical components work at a constant temperature to improve the stability, life and reliability of all components.

2.5 机床全密封防护，前设推拉门，两侧及后方设维修门，装夹、维修方便易行。

The machine tool is fully sealed and protected, with a sliding door in front and maintenance doors on both sides and at the rear, making clamping and maintenance easy and convenient.

2.6 设置有吸雾装置、灭火装置，环保、安全。

Set up with fog suction device, fire extinguishing device, environmental protection, safety.



滚筒式硬质合金圆棒倒角机

Roller type carbide rod
chamfering machine



Equipment Introduction 设备介绍

该系列产品是一款硬质合金棒材外圆自动倒角磨削的专用机床。该设备适用于小规格硬质合金棒材外圆倒角。蜗轮机构传动带动送料盘旋转，自动送料。通过X轴、Y轴调节位置，工作砂轮成45°角水平于送料盘。胶轮旋转运动与送料盘静止运动之间的作用力带动棒材旋转进行磨削倒角。

This series of products is a special designed machine for automatic chamfering grinding of cemented carbide rods. The equipment is suitable for small size cemented carbide rod round chamfering. The worm gear mechanism drives the feeding disc to rotate and automatically feed. The position is adjusted by X and Y axes and the grinding wheel is horizontal at 45° angle to the feeding plate. The force between the rotating motion of the rubber wheel and the static motion of the feeding disc brings the rod to rotate for grinding chamfering.

Parameters 产品参数

设备型号 Equipment Model	DF-GTJ04	DF-GTJ06	DF-GTJ08
加工范围 Processing Range	φ~ 4x40 75m	φ~ 6x40 75m	φ~ 8x40 75m
最大磨削直径 Max grinding diameter	中4mm	中6mm	中8mm
X轴送料行程 X Feeding schedule	50mm	50mm	50mm
Y轴送料行程 Y Feeding schedule	50mm	50mm	50mm
倒角精度 Chamfering accuracy	±1° / ±0.05 mm	1° / ±0.05m m	1° / ±0.05m m
主轴转速 Spindle speed	1400 rpm	1400 rpm	1400 rpm
外形尺寸 Boundary dimension	1190x585x 1338mm	1190x585x 1338mm	1190x585x 1338mm
机器重量 Machine weight	350kg	350kg	350kg



全自动硬质合金圆棒倒角机

Automatic Carbide Rod Chamfering Machine

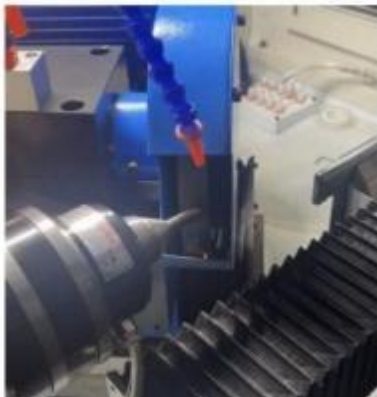


Equipment Introduction 设备介绍

该倒角机是专门针对大规格硬质合金棒材外圆倒角磨削而设计的专用机床。该设备利用夹料主轴和前后强力推送的精密空压夹头，将棒材定位并带动旋转。X轴与夹料轴成45°夹角，通过X、Y双轴同步运动，使磨削砂轮完成棒材端部倒角。同时通过自动上料机构同步上料，直线推动已完成的棒材向后出料，从而实现加工过程的全自动化

The chamfering machine is a special designed machine for cylindrical chamfering grinding of large-sized cemented carbide rods. The equipment uses the clamping spindle and the precision air pressed chuck to push the rod forward and backward to right position and to rotate the rods. The angle between the X axis and the clamping axis is 45°, and the grinding wheel finish chamfering of the rod through the synchronous movement of the X and Y axes. At the same time, through the automatic feeding mechanism, the material is fed synchronously, and the finished rod is pushed back in a straight line, so as to realize the full automation of the processing process.

Parameters 产品参数



型号mode	QDJ-20NC
倒角数量 Number of chamfers	1支 1pc
机械性能 Mechanical propert	全伺服进给系统、PLC系统Full servo feed system, PLC system
送料行程 Feeding schedule	400mm
最大倒角直径 Maximum chamfer diameter	1000*300mm
倒角精度 Chamfering accuracy	±1°
倒角外径范围 Chamfering outer diameter range	中8~中18 mm
砂轮外径 Grinding wheel diameter Oil pump motor	中200x中31.75x20 mm
主电机 Main motor	1.5kW
伺服总功率 Total servo powe	5kW
工作台速度 Table speec	3~23mm/min
X轴行走精度 X Travel accuracy	0.02~0.03mm
Y轴进给精度 Y Feed accuracy	0.02~0.05mm
Z轴行走精度 Z Travel accuracy	0.02~0.03mm
倒角长度范围 Chamfering length rang	50~120mm
外形尺寸长*宽*高 Dimensions length*width*height	1750x1500x2200
机器重量 Machine weight	1350kg

精密外径研磨机

Precision O.D.Grinding Machine



Equipment Introduction 设备介绍

机身由底座、中座、上座三大件组成。X、Y轴可进行左右、前后移动，中心高度上下可调。以滚轮、压轮夹持产品，45°成型砂轮切磨的方式研磨工件。

The machine body consists of three parts: base, middle and upper parts. The X and Y axes can be moved in four directions in a plane, and the center height can be adjusted up and down. The rod will be clamped by a roller and a press wheel and then ground by a 45° formed grinding wheel.

Parameters 产品参数

型号model	DF-YM25
可夹持工件直径 Can clamp the workpiece diameter	03~ 032mm
最大前后行程X Maximun front and rear stroke X	40mm
最大左右行程Y Maximun left and right stroke Y	70mm
工作头转速 Working head speed	180 rpm
工作头旋转角度 Working head speed	±5°
主轴转速 Spindle speed	5000 rpm
主轴马达 Spindle motor	3/4HP
机器尺寸 Machine size	700mm*600 mm*1600m
机器重量Machine weight	220KG

精密内径研磨机

Precision I.D.Grinding Machine



Equipment Feature 设备特点

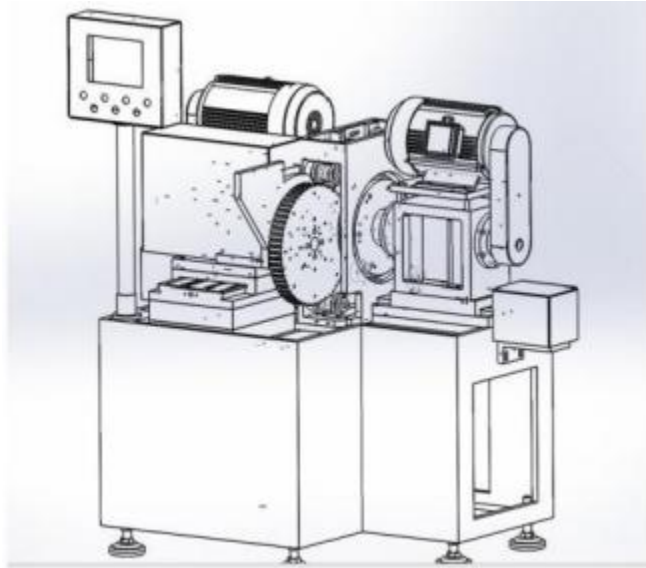
- 工件由滚轮固定。
- X、Y 轴进给均为手动操作。
- 砂轮主轴运转由变频器控制。
- 砂轮轴和工作轴无级变速。
- 双“V”型导轨经过硬化处理。滑动表面经过精密研磨，涂有 Turcite-B 并手工刮擦。
- The workpiece is fixed by rollers.
- X-and Y-axis feeds are manually operated.
- The grinding wheel spindle operation is controlled by a frequency converter.
- The grinding wheel spindle and work axis are infinitely variable.
- Double “V” guideways are hardened. Sliding surfaces are precision ground, coated with Turcite-B and hand scraped.

Parameters 产品参数

型号 model	DF-YM25
可夹持工件直径 Can clamp the workpiece diameter	03 [~] 032mm
最大前后行程X Maximun front and rear stroke X	40mm
最大左右行程Y Maximun left and right stroke Y	70mm
工作头转速 Working head speed	180 rpm
工作头旋转角度 Working head speed	±5°
主轴转速 Spindle speed	5000 rpm
主轴马达 Spindle motor	3/4HP
机器尺寸 Machine size	700mm*600 mm*1600m
机器重量 Machine weight	220KG

双端面磨床

Double Face Grinding Machines



Equipment Introduction 设备介绍

机床专为硬质合金圆棒磨削平面加工而设计，也可以用于其他圆柱形材料平面加工，替代传统的平面磨床。磨削加工时，两个端面可同时进行磨削，一次成型。工件由送料盘自动供料，通过接料器把工件连续不断的送进送料盘的槽中，送料盘连续运转输送，通过砂轮，两砂轮（左右砂轮）对工件两端面进行磨削。

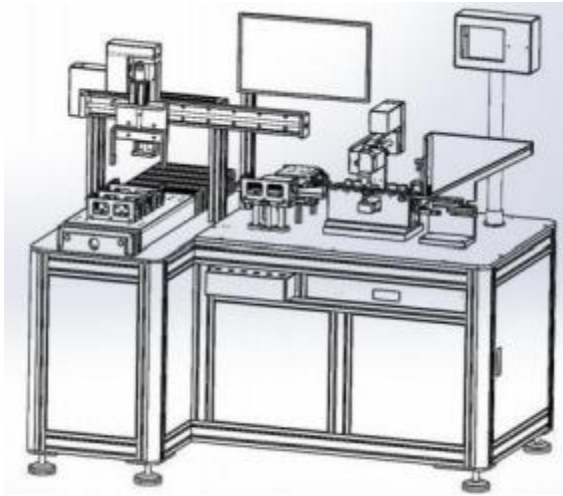
The machine is specially designed for surface grinding of carbide round rods, and can also be used for surface grinding of other cylindrical materials, replacing the traditional surface grinding machine. When grinding, both end faces can be ground at the same time, forming the workpiece at one time. The workpiece is automatically fed by the feeding disk, and the workpiece is continuously fed into the groove of the feeding disk through the feeder. The feeding disk continuously runs and conveys the workpiece through the grinding wheels, and the two grinding wheels (left and right grinding wheels) grind the two end surfaces of the workpiece.

Parameters 产品参数

设备型号	DF-SDM300	DF-SDM600
Equipment Model	DF-SDM300	DF-SDM600
磨削外径大小	$\phi 6\text{mm}$	$\phi 8\text{mm}$
Grinding outer diameter size	$\phi 6\text{mm}$	$\phi 8\text{mm}$
长度加工范围	45~50mm	45~50mm
Length Processing Range	45~50mm	45~50mm
砂轮外形尺寸	中300×中180×H26mm	$\phi 300 \times \phi 180 \times H26\text{mm}$
Dimensions of grinding wheel	中300×中180×H26mm	$\phi 300 \times \phi 180 \times H26\text{mm}$
砂轮转速	1440 r/min	1440 r/min
Wheel speed	1440 r/min	1440 r/min
送料盘转速	0.4r/min	0.5~2r/min
Feed tray speed	0.4r/min	0.5~2r/min
电机总功率	8.45kW	16kW
Power	8.45kW	16kW
机床外形	1280×1150×1400mm	1800×1200×1800mm
Outside Dimension	1280×1150×1400mm	1800×1200×1800mm
机床净重	1200 kg	1600kg
Net Weight	1200 kg	1600kg

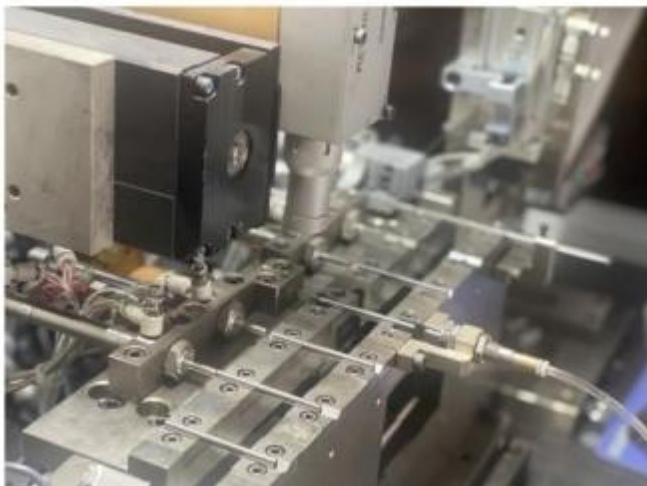
全自动棒料检测包装机

Automatic Bar Testing
Packaging Machine



Equipment Feature 设备特点

- 全自动上下料分类收纳
 - 双机械手设计提高工作效率
 - 采用 KEYENCE 测量仪器高精度高稳定性
 - 强大的软件功能可自动生成 EXCEL 报表
 - 全铝合金封闭设计安全性最高
- Fully automatic loading and unloading classified storage
- Dual manipulator design improves work efficiency
- Using KEYENCE measuring instruments with high precision and stability
- Powerful software functions can automatically generate EXCEL reports
 - Al-aluminum alloy closed design provides the highest safety



全自动送料机

Automatic feeding and receiving machine



非标自动化设备定制

Non-standard automation equipment customization

无心磨自动化连线
Centerless grinding automation line



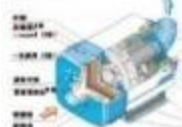
空气过滤器 Air Filter

粉尘离心式过滤
Metal dust centrifugal filtration



现代机械加工领域，一般使用冷却油作为冷却，从而产生大量的油雾油烟，影响工厂的生产环境，有害于员工的身心健康。CRD雾油分离器可解决以上问题，符合国际职业健康安全（OSHA）和（NIOSH）标准。

结构示意图



Modern processing machinery in the field, the use of general floating oil as a cooling fluid and coolant, resulting in a lot of fumes from all mist, shadow Ring factory production environment, harmful to the members Physical and mental health workers. CRD cleaner oil mist can effectively solve the above problem, in line with International Occupational Health and Safety (OSHA) and (NIOSH) standard.



砂轮修整机

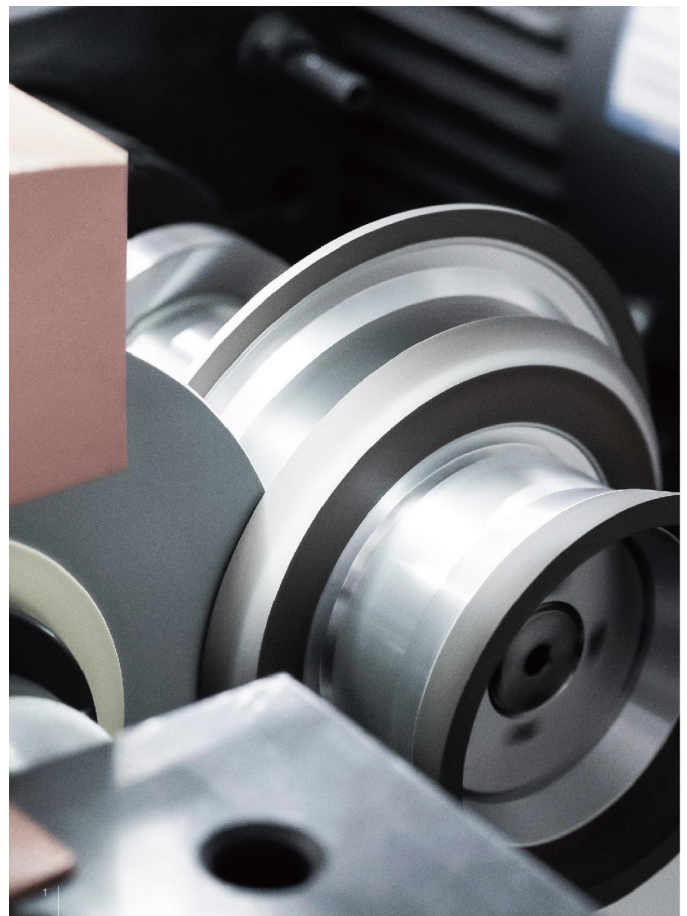
Diamond Wheel Truing and Dressing Machine



Product Overview

DF-GX5S is a fully-sealed grinding wheel dresser introduced in response to the national environmental protection policy to meet the requirements of customers' workshop environment. It is a new product based on DF-GX3S

The machine itself can provide simple and efficient dressing of diamond wheels, CBN wheels and multiple wheels. It can dress planes, angles, arcs and shaped wheels. The machine is easy to operate and has high accuracy. At the same time, it can achieve water mist cooling and natural cooling without causing environmental pollution.



Adjustment of Grinding Wheel Speed

When Using Dresser

According to our experience, the linear speed ratio of the dressing grinding wheel and the diamond /CBN grinding wheel being dressed is:20:5, so adjust the different speeds according to the diameter, see the table below for details

diameter	Diamond rotation speed (rpm)	(Dressing wheel speed) rpm
50	1150	7640
75	760	5090
100 *+	570	3820
125	460	3060
150	380	2550
200	290	1910
250	230	1530
300	190	1270

Grinding Wheel Size Selection

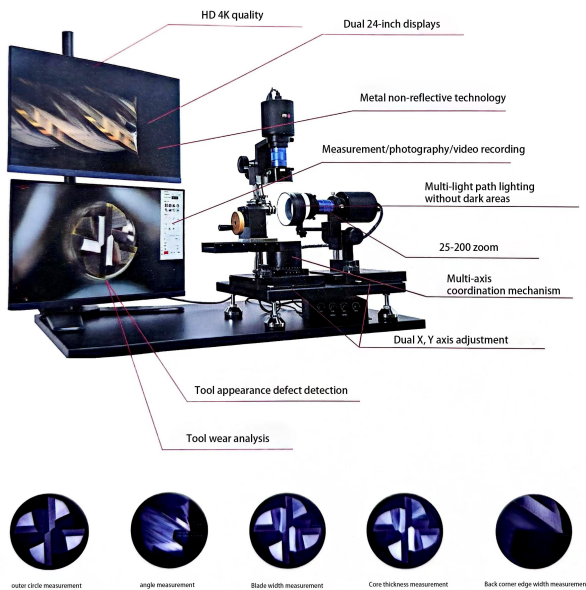
The particle size of the diamond/CBN grinding wheel being dressed	Study on combination of dressing grinding wheel	Dressing wheel teaching degree
-80	GC WA	30-46
100-200	GC WA	46-8
200-325	GC WA	80-12
325-1000	gC	120-22C
1000-	Gc	220-800

刀具外观检测仪

Cutting Tools Observe & Measure Microscope

Cutting Tools Observe & Measure Microscope

DF-TP900

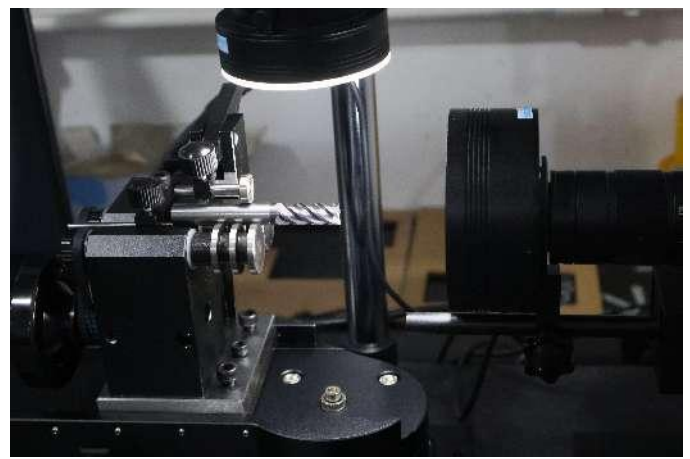


AAA 广东省高新技术企业 2022 年度高新技术企业 11 月 17 日
Zongying Zhiye Science and Technology Park, No. 23 Huidong 3rd Road,
Jinfa Street, Dongguan City, Guangdong Province, China
TEL: +86 135 5279 0288 <http://www.zdfmc.com>

Promote the development of tool quality in China and allow more companies to use measuring instruments

Product Overview

The TP900 series of products newly developed by Dingfeng Confidential Machinery is an integrate microscopic imaging tool detection system tailored specifically for tool users. The machine has built-in intelligent chips and integrated a fully functional microscopic image processing and measurements software. The 4 K image quality image is smooth, the color is clear and natural, the response is fast, and the details are rich and exquisite. Relying on the performance of powerful chips, the operation responses speed is extremely fast, and the software function is strong. Users can enjoy the perfect observation experience without the PC and completely rely on the camera.



Equipment Model 设备型号

Equipment Name	Model	Main function
Ultra-HD Tool Appearance Detection Equipment	DF-TP900	The appearance of the tool is observed in zoomed HD magnification, and 2D dimensions are measured.

Product parameter 技术参数

Equipment Model	DF-TP900
Tool clamping range	1-30mm
Lens Configuration	Smart Camera 8MP*2
	0.7x-5.6x super depth-of-field zoom lens*2
	0.5x eyepieces*2
	DF special adjustable light source *3
Connection Methods	HDMI Pure digital HD signal, direct connection to the monitor
8-axis co-movement mechanism	Fixture axis: X-30mm, Y-30mm, A-360°swivel, C-270°swivel
	Vertical lens axis: Z-150mm Flush mount lens axis: X-30mm, Y-30mm, Z-15mm
Resolution, frame rate, color	3840*2160, 30FPS, Black & White/Color
Magnification	27 inches: 27-210x
Input Voltage	220v
Standard Configurations	Display stand x 1
	Wireless Mouse x2
	Mouse pad x1
	Marble platform 300*400*50
Package Size	640x400x450mm

Machine weight	60kg
----------------	------